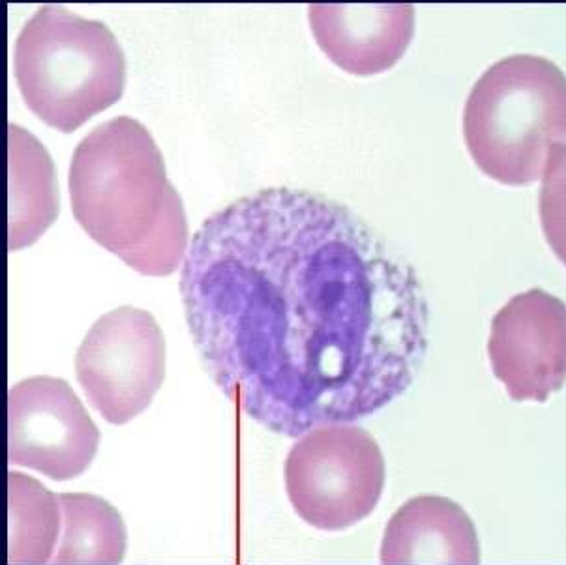


Granulocyte Variations



toxic neutrophil

- Variations in granulocytes appearance may be caused by maturation defects, inflammation, and infections.
- Maturation defects are due to genetic or metabolic disorders.
- Bacterial infections can cause 'toxic' changes to neutrophils.

Granulocyte Variations

Hyposegmentation

Hypersegmentation

Auer rods

Toxic granulation

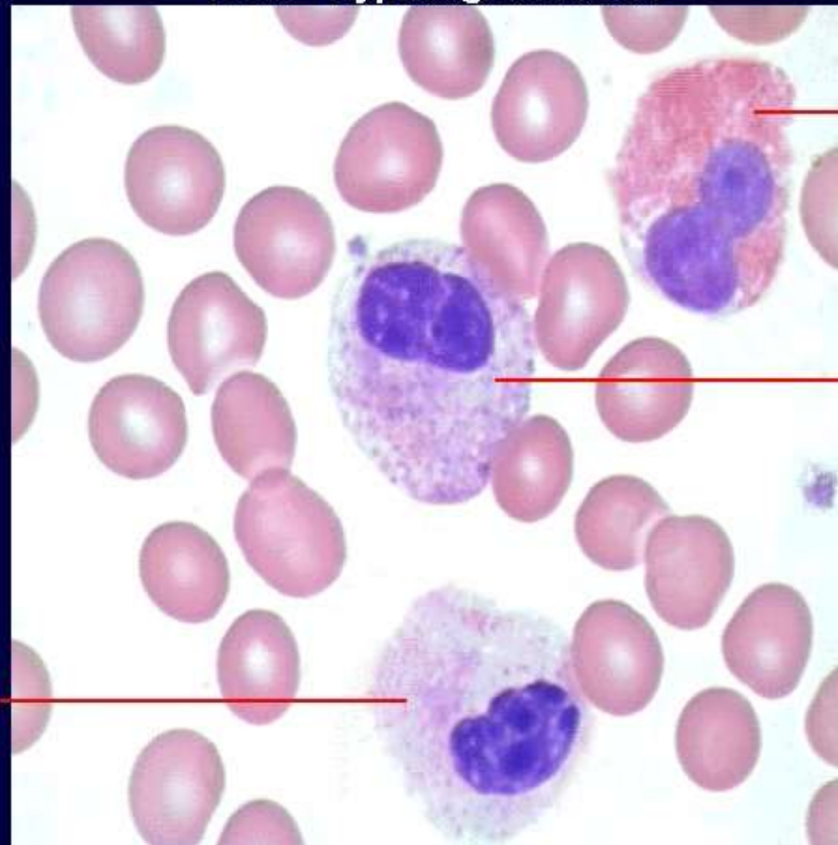
Toxic vacuolation

Döhle bodies

Morphology:
granulocytes with one or two poorly segmented nuclear lobes

WBC - Hyposegmentation

hyposegmented neutrophil



hyposegmented eosinophil

hyposegmented neutrophil

Comment: Hyposegmented neutrophils may be seen in patients with Pelger-Huet anomaly or myelodysplastic syndrome.

Granulocyte Variations

Hyposegmentation

Hypersegmentation

Auer rods

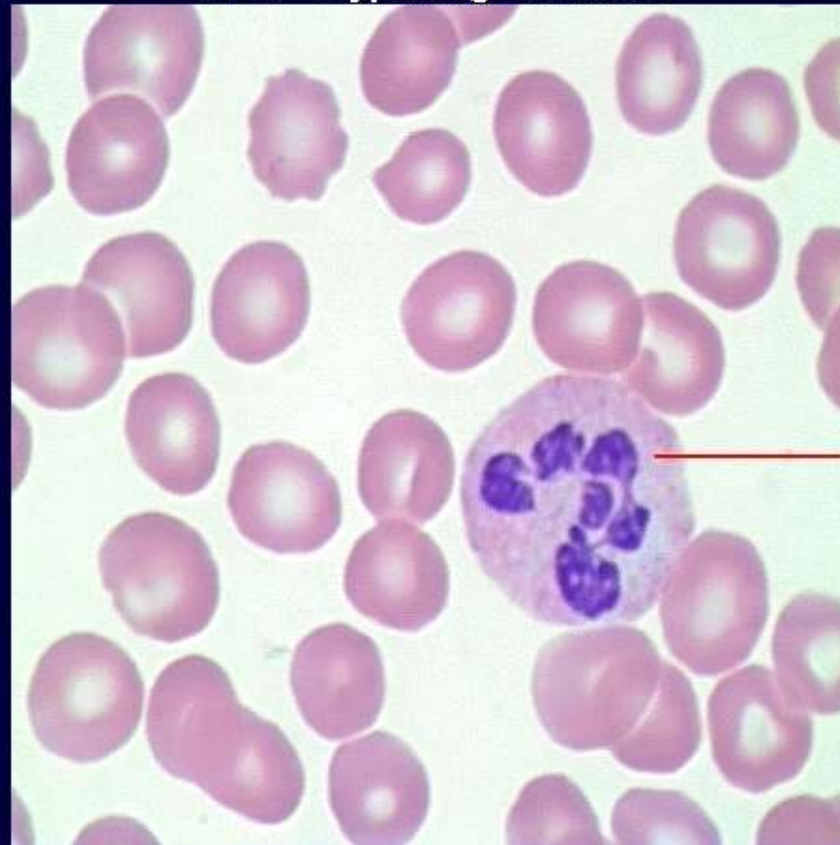
Toxic granulation

Toxic vacuolation

Döhle bodies

Morphology: neutrophil with six or more nuclear segments

WBC - Hypersegmentation



hypersegmented neutrophil

Comment: Hypersegmented neutrophils are seen in patients with anemia due to Vitamin B12 or folate deficiency.

Granulocyte Variations

Hyposegmentation

Hypersegmentation

Auer rods

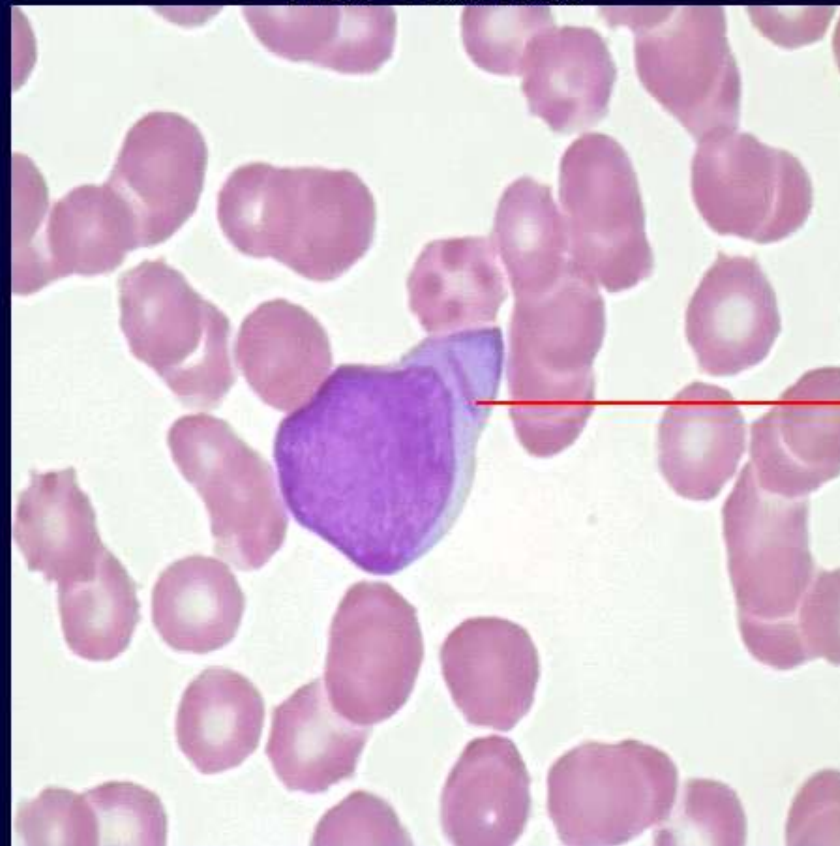
Toxic granulation

Toxic vacuolation

Döhle bodies

WBC - Auer rods

Morphology: pink, rod-shaped inclusions in myeloblast cytoplasm



Auer rod

Comment: Auer rods may be seen in myeloblasts from patients with acute myelogenous leukemia.

Granulocyte Variations

Hyposegmentation

Hypersegmentation

Auer rods

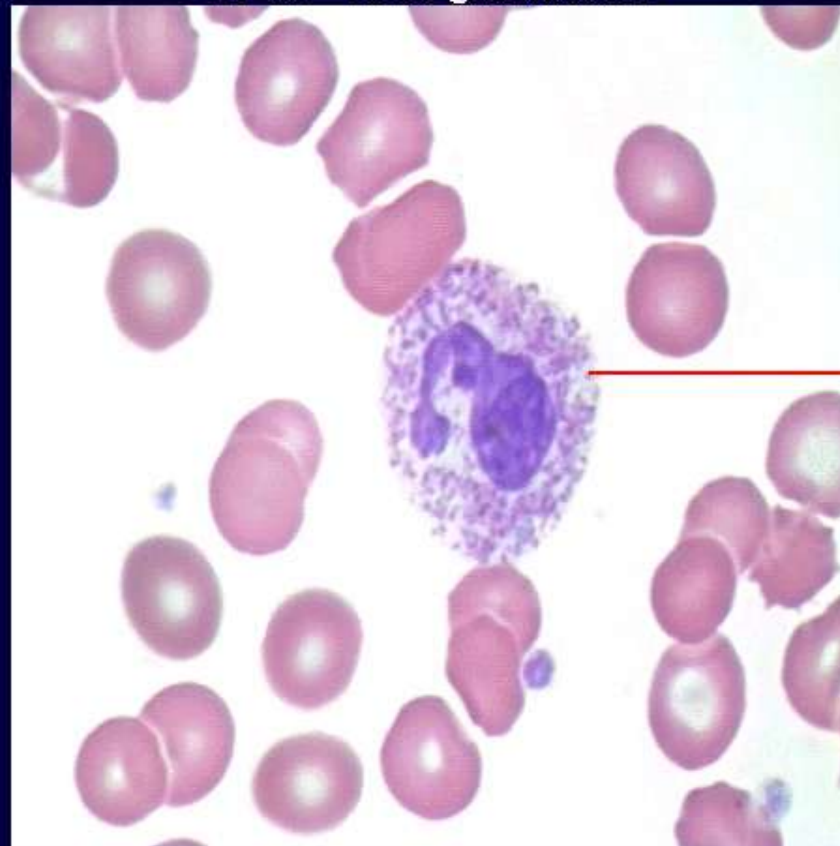
Toxic granulation

Toxic vacuolation

Döhle bodies

Morphology: neutrophil with increased dark granules in its cytoplasm

WBC - Toxic granulation



toxic granulation

Comment: Toxic granulation is seen in patients with severe bacterial infections.

Granulocyte Variations

Hyposegmentation

Hypersegmentation

Auer rods

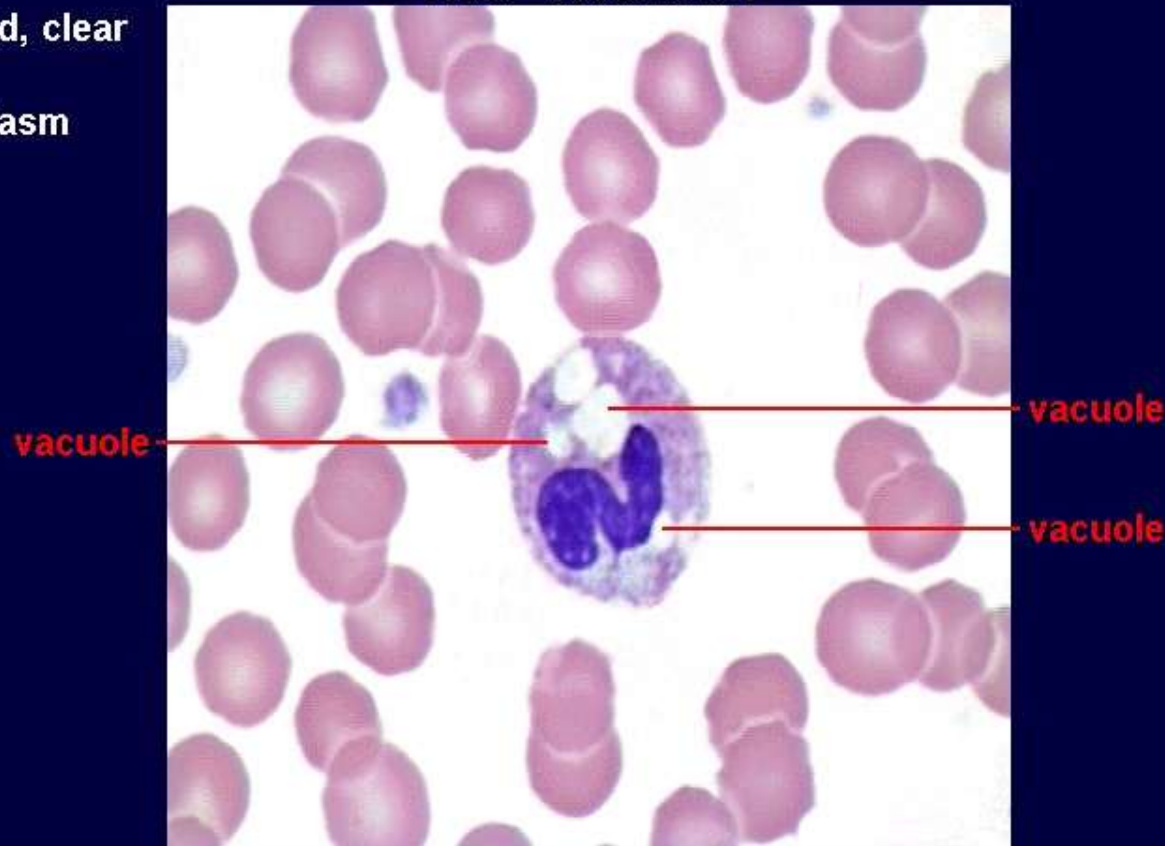
Toxic granulation

Toxic vacuolation

Döhle bodies

Morphology: round, clear spaces within granulocyte cytoplasm

WBC - Vacuolation



Comment: Toxic vacuolation may be seen in patients with severe bacterial infections.

Granulocyte Variations

Hyposegmentation

Hypersegmentation

Auer rods

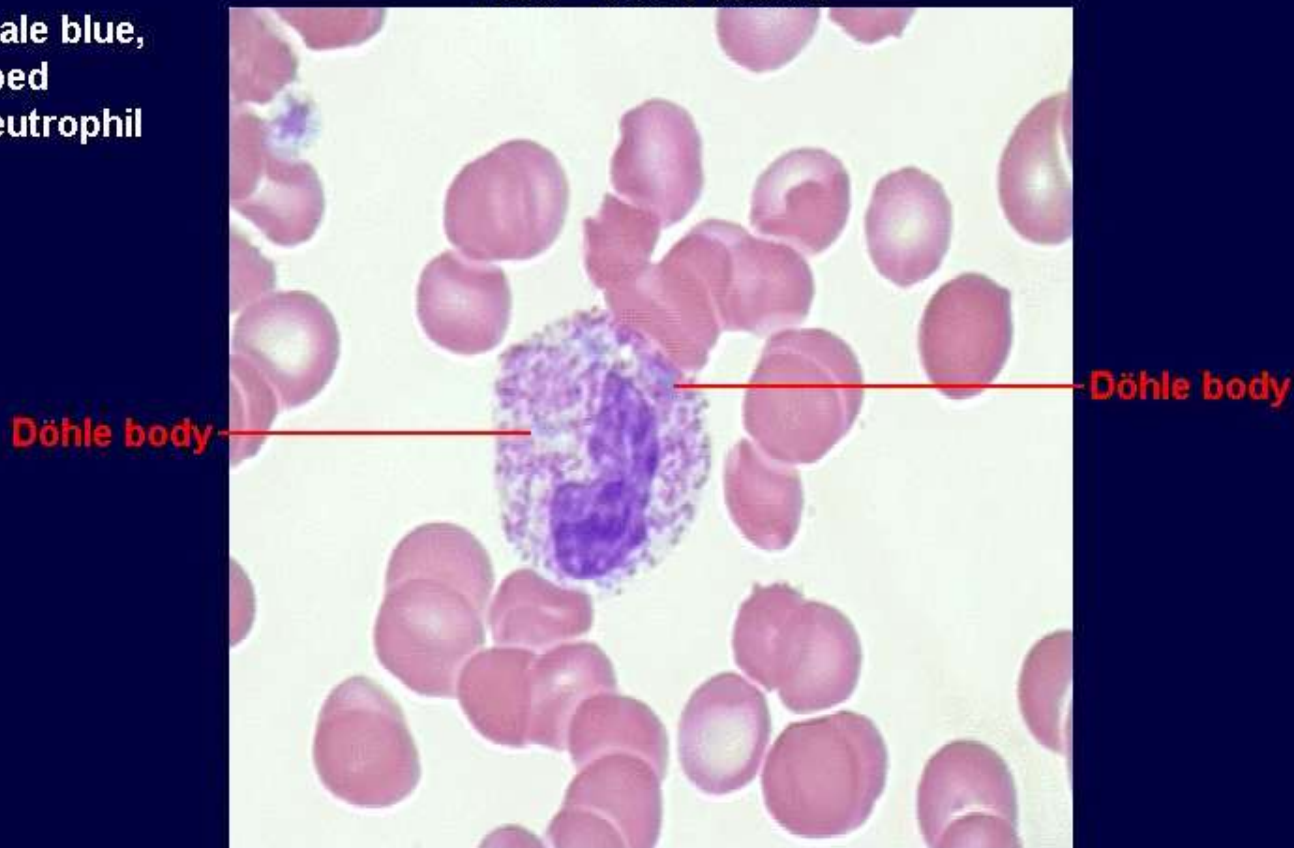
Toxic granulation

Toxic vacuolation

Döhle bodies

Morphology: pale blue, irregularly shaped inclusions in neutrophil cytoplasm

WBC - Döhle bodies



Comment: Döhle bodies consist of ribosomes and/or rough endoplasmic reticulum and are seen in severe bacterial infections.