

# PLEXUS COELIACUS

---

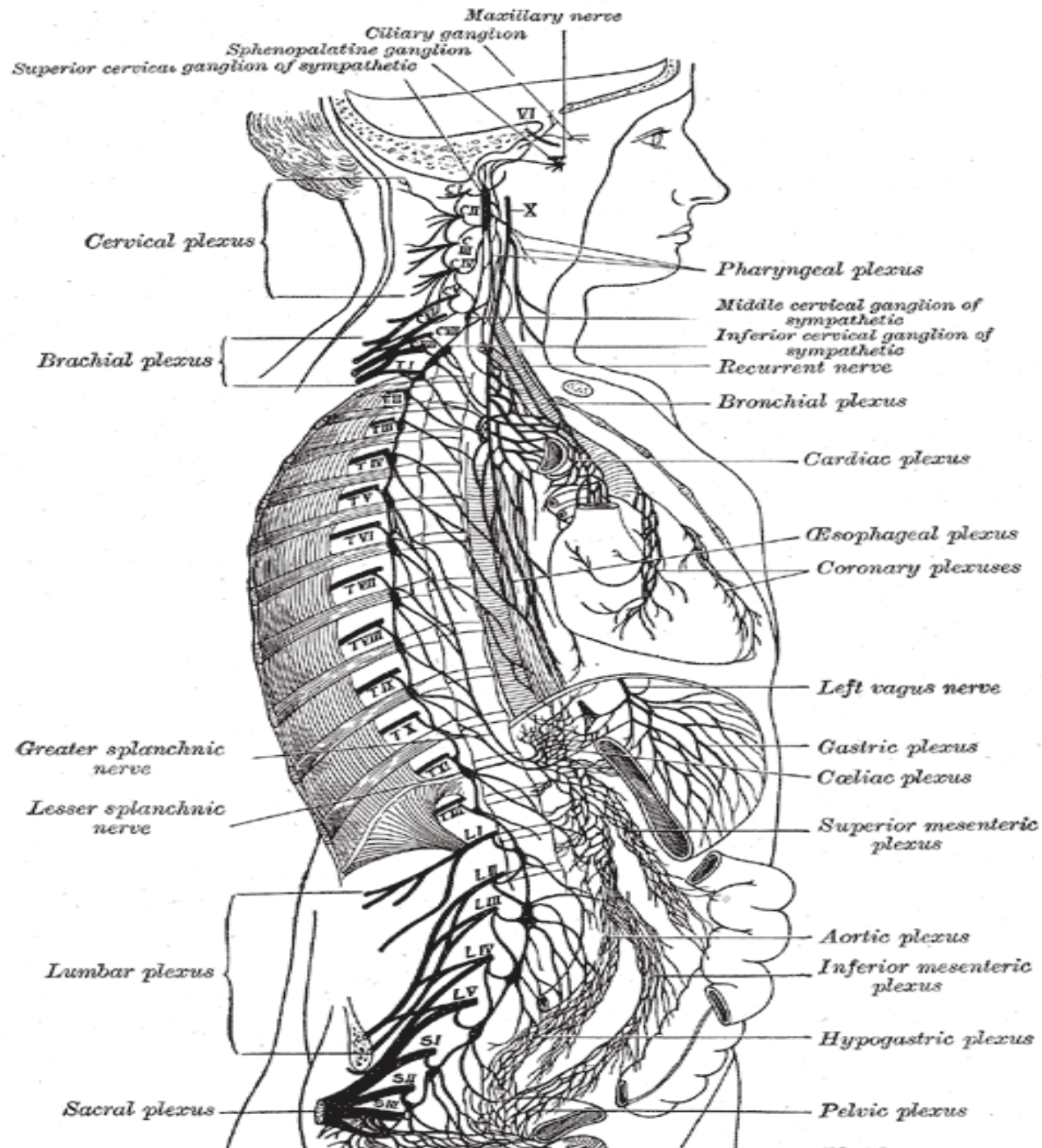
Departement of Anatomy

FK UNISSULA

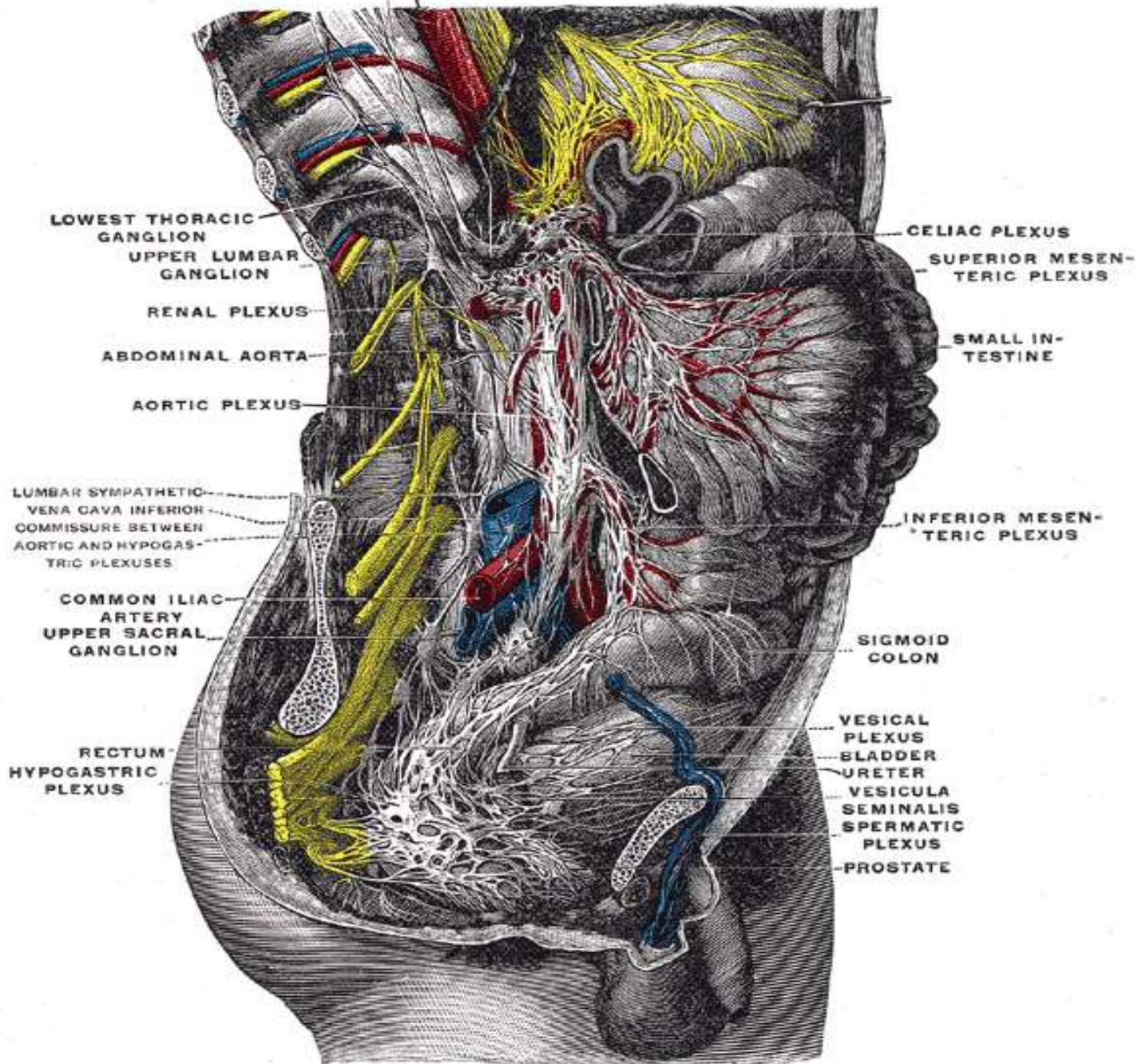
2018

- The **celiac plexus** or **coeliac plexus**, also known as the **solar plexus** because of its radiating nerve fibers,
- is a complex network of nerves (a [nerve plexus](#)) located in the abdomen, near where the [celiac trunk](#), [superior mesenteric artery](#), and [renal arteries](#) branch from the [abdominal aorta](#)

- It is behind the stomach and the omental bursa, and in front of the crura of the diaphragm, on the level of the first lumbar vertebra.
- The plexus is formed (in part) by the greater and lesser splanchnic nerves of both sides, and fibers from the anterior and posterior vagal trunks.



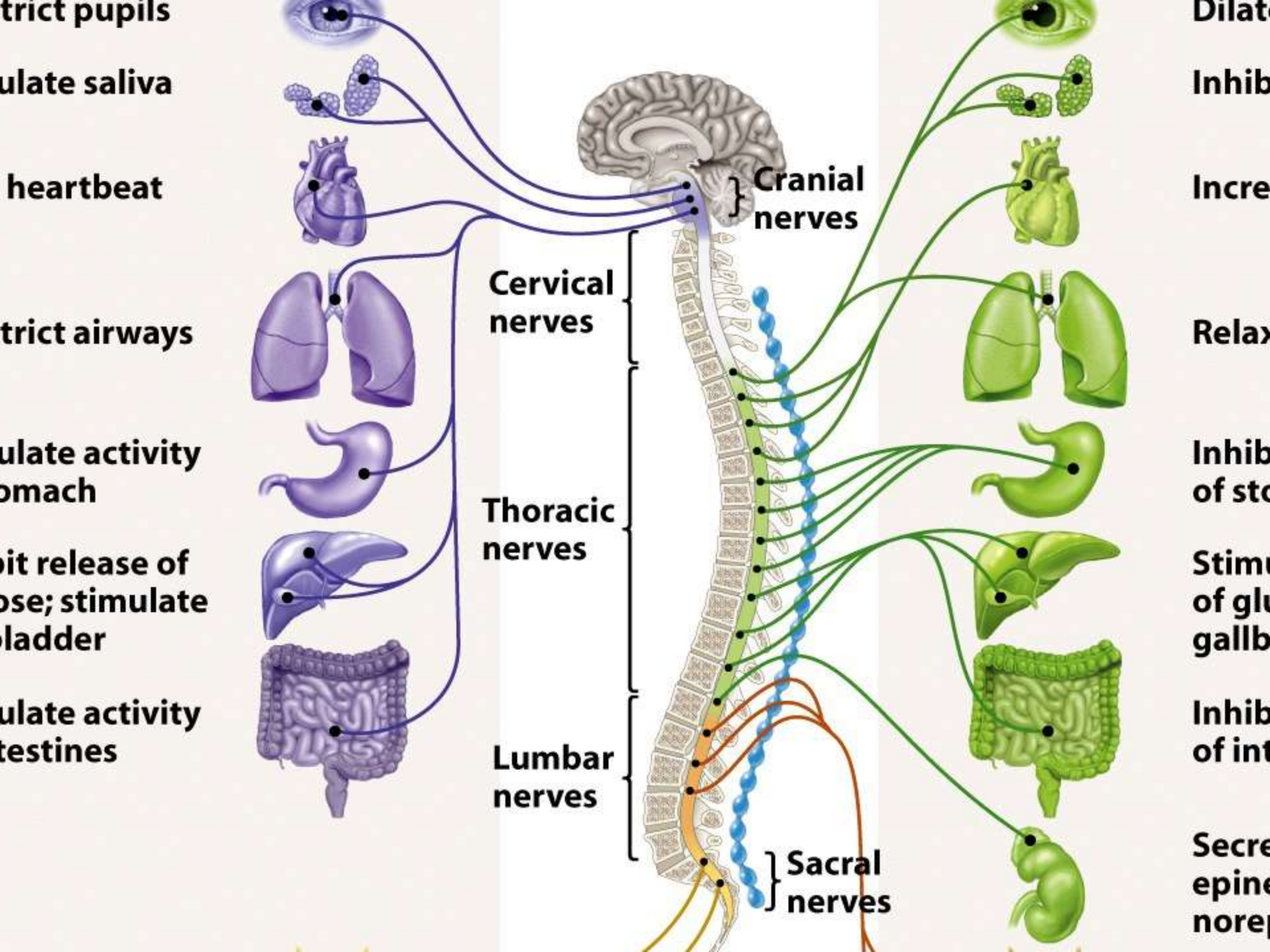
**GREATER SPLANCHNIC, CELIAC GANGLION**



- The celiac plexus proper consists of the [celiac ganglia](#) with a network of interconnecting fibers.
- The [aorticorenal ganglia](#) are often considered to be part of the celiac ganglia, and thus, part of the plexus.
  
- The celiac plexus includes a number of smaller plexi:
  - [Hepatic plexus](#)
  - [Splenic plexus](#)
  - [Gastric plexus](#)
  - [Pancreatic plexus](#)
  - [Suprarenal plexus](#)

Other plexuses that are derived from the celiac plexus:

- [Renal plexus](#)
- [Testicular plexus](#) / [ovarian plexus](#)
- [Superior mesenteric plexus](#)
- [Inferior mesenteric plexus](#)







Thank  
You